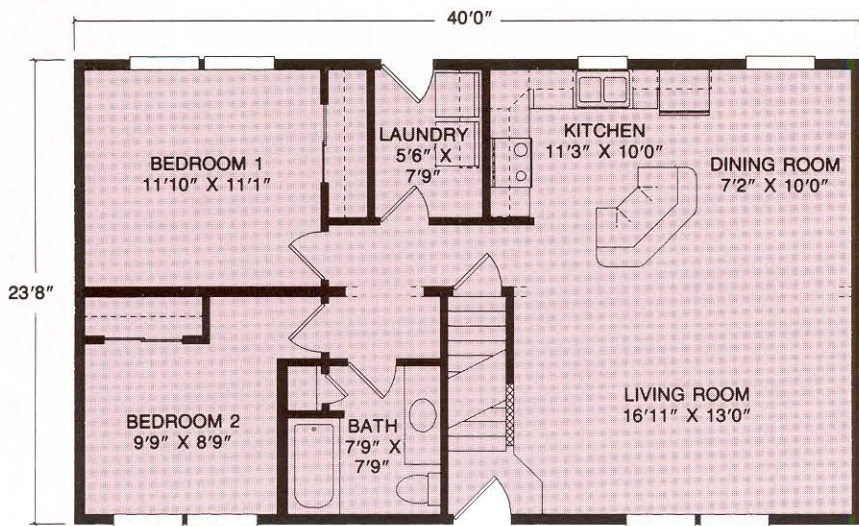


CAPE PLANS

KEYSTONE SERIES

Come Home to Comfort and Quality

**Superior
Builders**

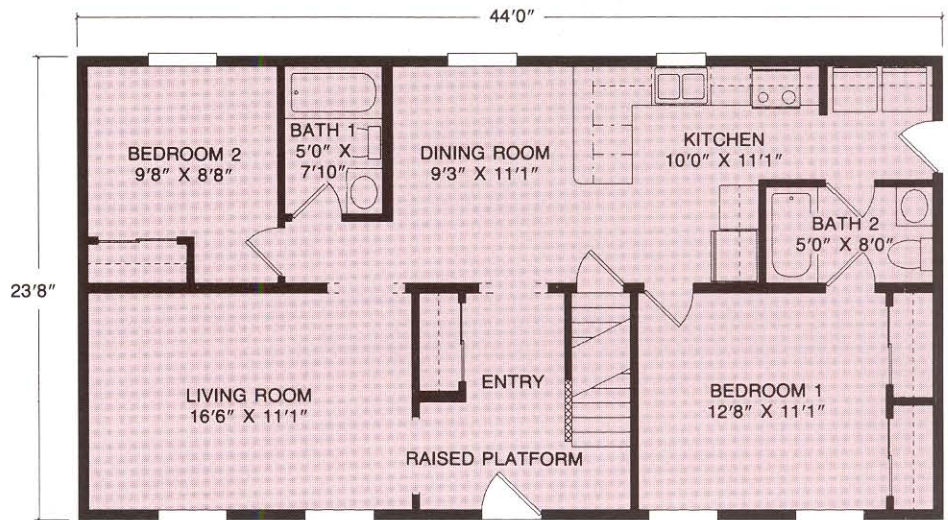


Cape Camden

Plan No. 105 ■ 946 SQ. FT.
 The quaint design of spacious comfort with two bedrooms, full bath, large kitchen/dining area and generous living room. Also available in 26' width.

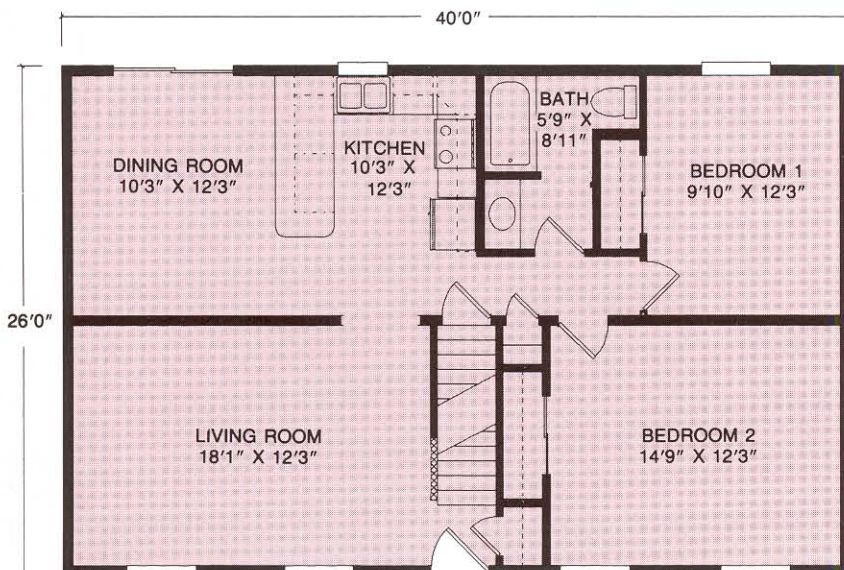
Cape Auburn

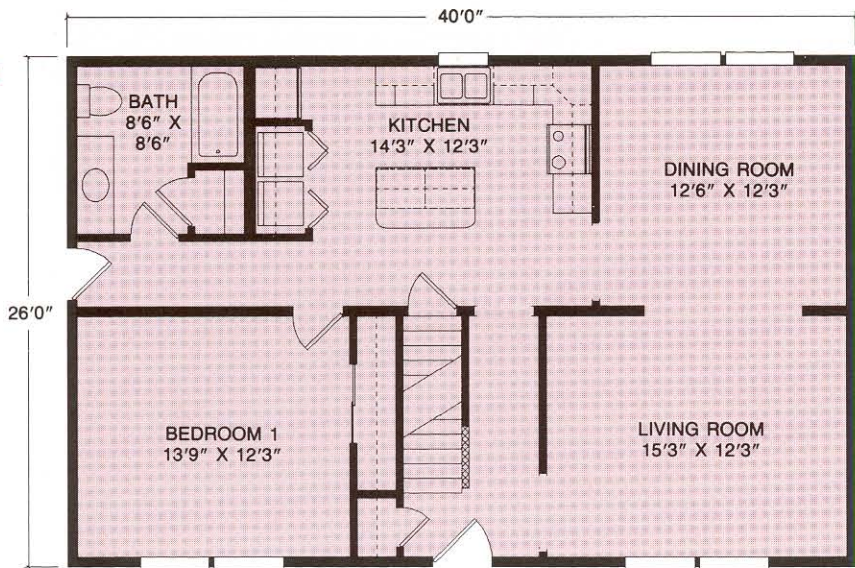
Plan No. 107 ■ 1041 SQ. FT.
 Distinctive living with immense living room opening into a formal dining room and expansive kitchen with island. Two spacious bedrooms with ample closet space and two full baths. Also available in 26' width.



Cape Cod

Plan No. 231 ■ 1040 SQ. FT.
 Featuring a grand living room and open kitchen and dining room area, this cape offers tremendous space. Two large bedrooms and generous bath perfectly accommodate family or guests. Also available in 27'6" width.





Cape Chester

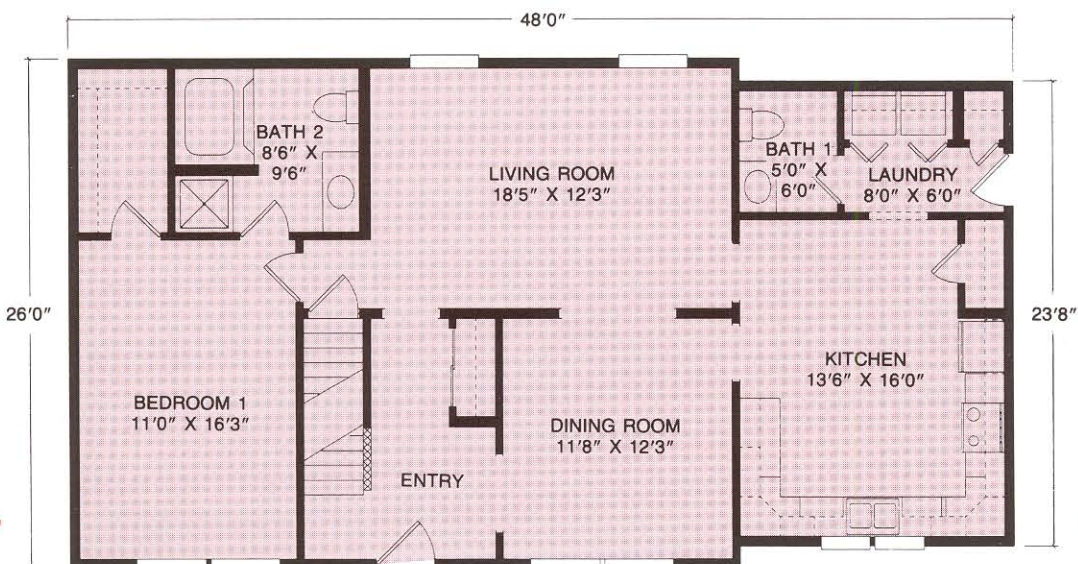
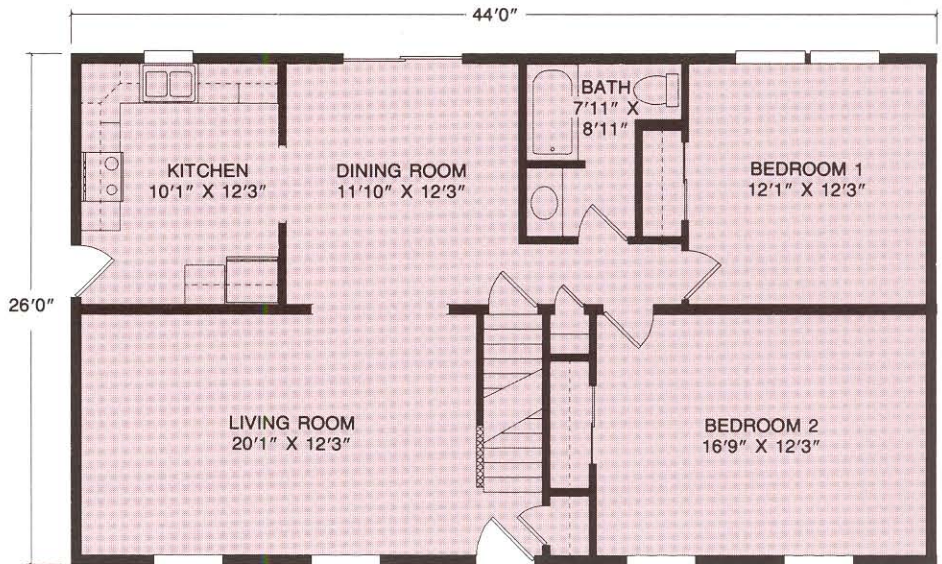
Plan No. 232 ■ 1040 SQ. FT.

Cozy and comfortable best describe this cape with welcoming foyer, living room, dining room and spacious kitchen. Also available in 27'6" width.

Cape Hatteras

Plan No. 233 ■ 1144 SQ. FT.

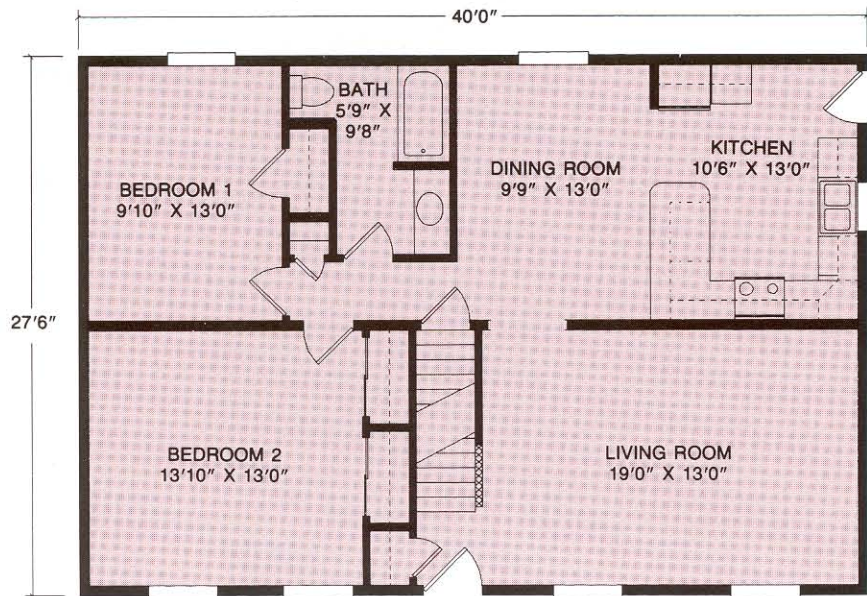
The expansive space of this home is perfect for family living with two large bedrooms, full bath, spacious living room and large dining room. Also available in 27'6" width.



Cape Preston

Plan No. 234 ■ 1214 SQ. FT.

A warm, spacious kitchen with adjoining utility room and half bath is the centerpiece of this magnificent home featuring formal living room and dining room, grand entrance foyer and master bedroom suite with luxurious bath and walk-in closet. Also available in 27'6" width.

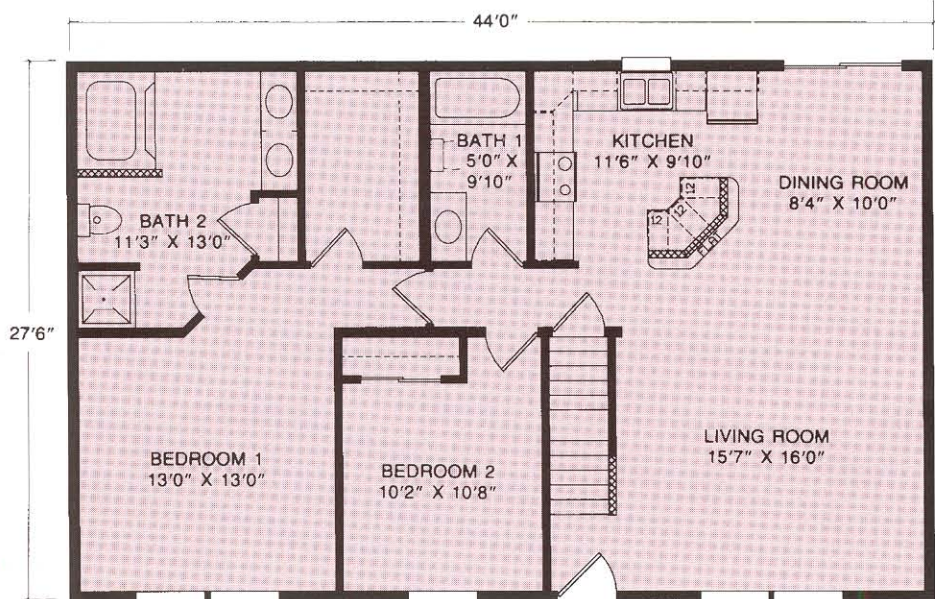
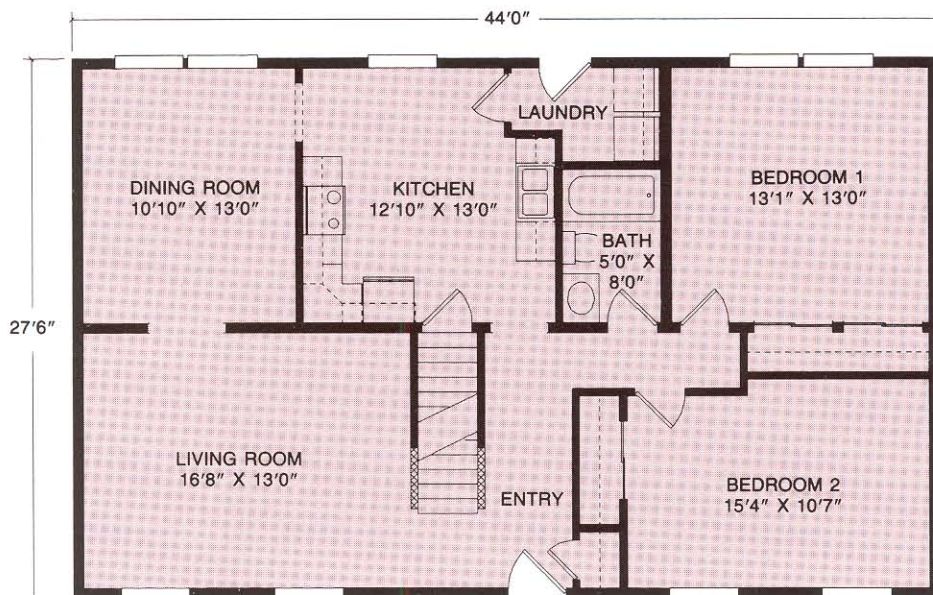


Cape May

Plan No. 309 ■ 1100 SQ. FT.
 A charming home with features you'll love. Two bedrooms, full bath, formal living room, and delightful kitchen.

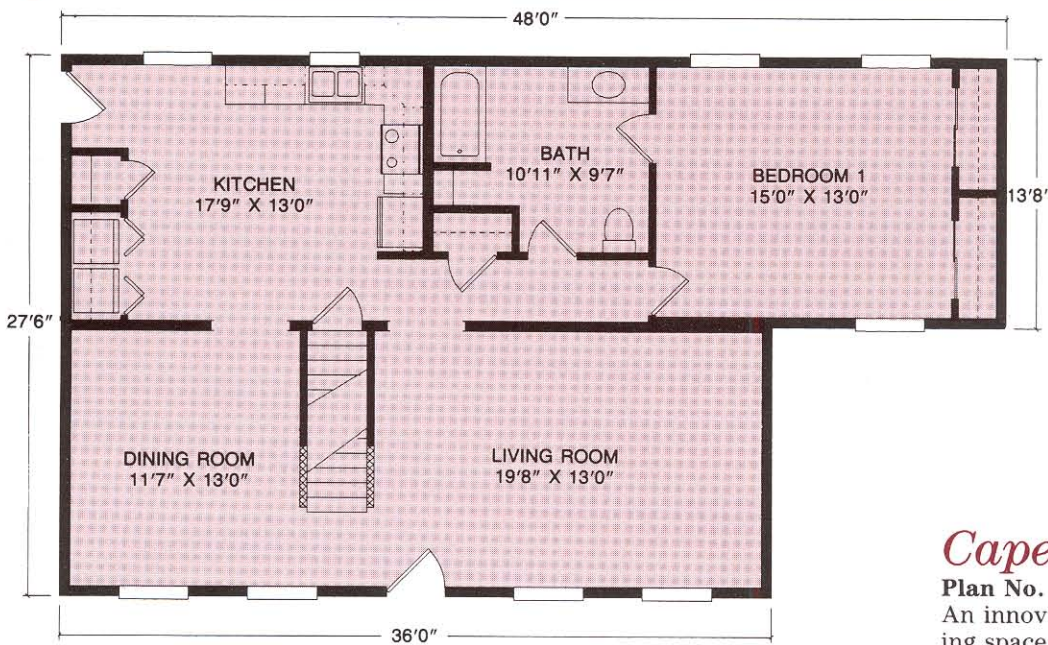
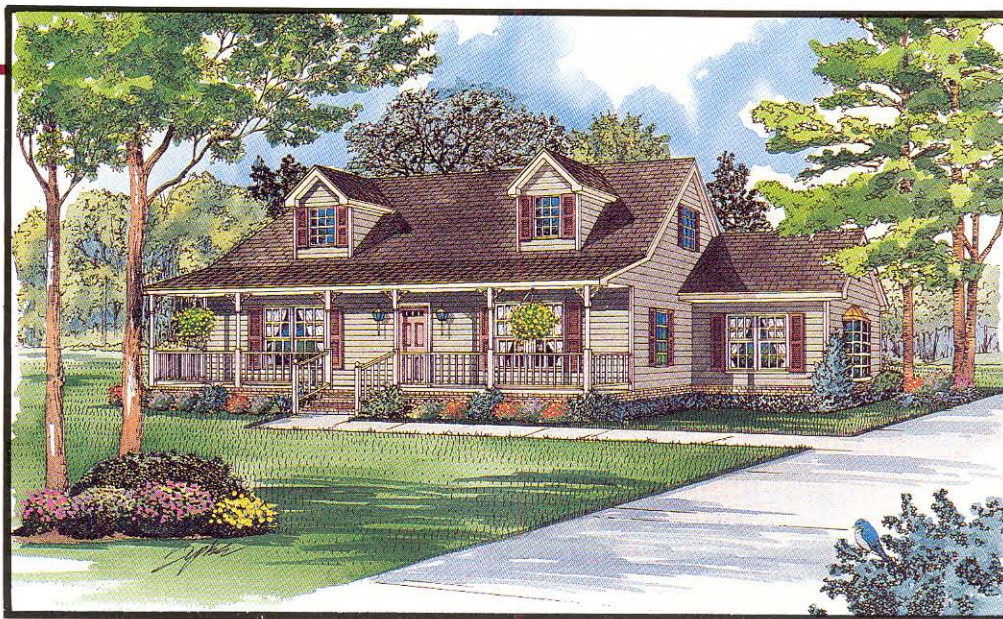
Cape Charles

Plan No. 317 ■ 1210 SQ. FT.
 Expansive space of this home is perfect for family entertaining and living with formal living room and dining room, spacious kitchen, two bedrooms, and full bath.



Cape Bristol

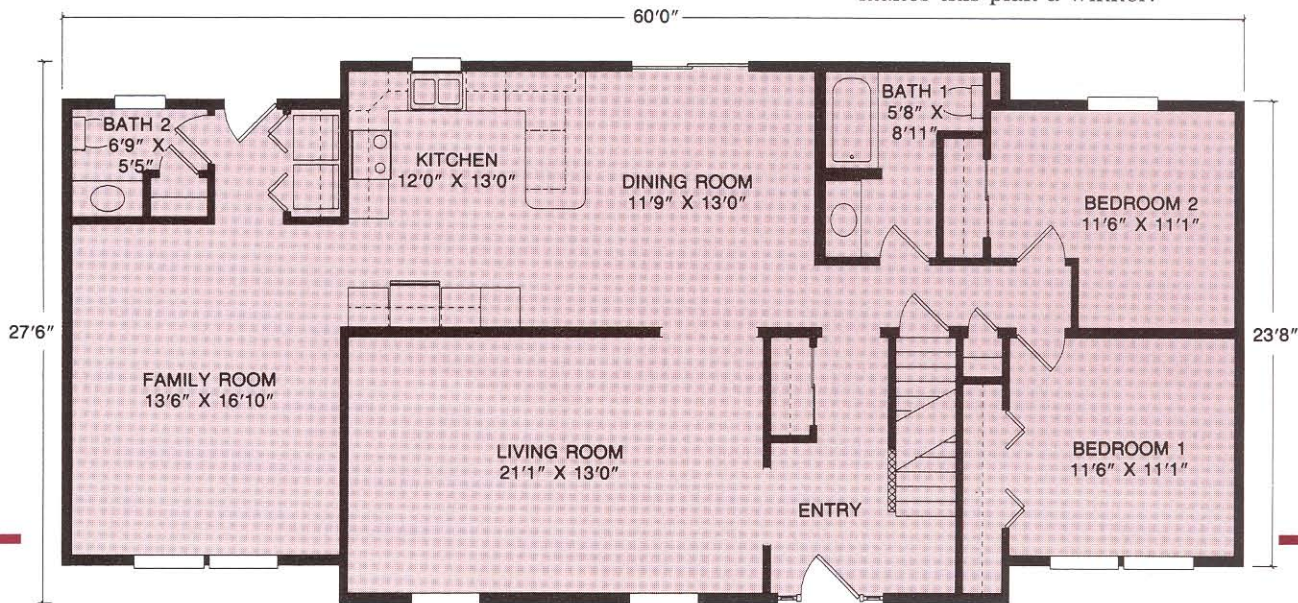
Plan No. 344 ■ 1210 SQ. FT.
 Relax in privacy and space with master bedroom suite featuring full bath and walk-in closet, additional bedroom, full bath and comfortable kitchen.

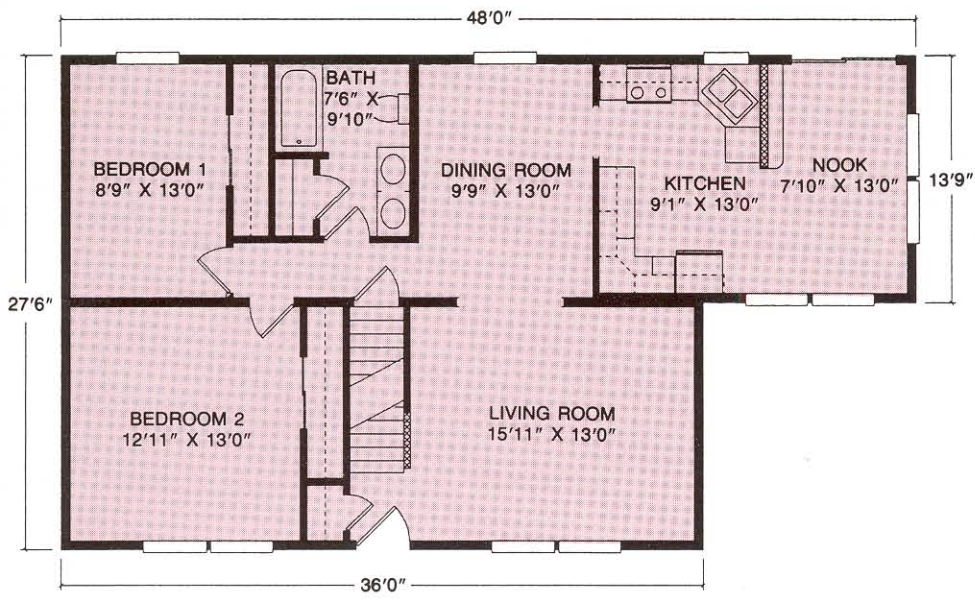


Cape Kennedy
Plan No. 340 ■ 1105 SQ. FT.
 Master bedroom with adjoining spacious bath offer private seclusion from living area that features expansive living room, formal dining room and large kitchen with convenient utility closet.

Cape Arlington

Plan No. 343 ■ 1576 SQ. FT.
 An innovative design creates unique living space featuring two bedrooms, formal living room, spacious kitchen, dining room, dramatic foyer, family room and one and a half bath with utility room makes this plan a winner.



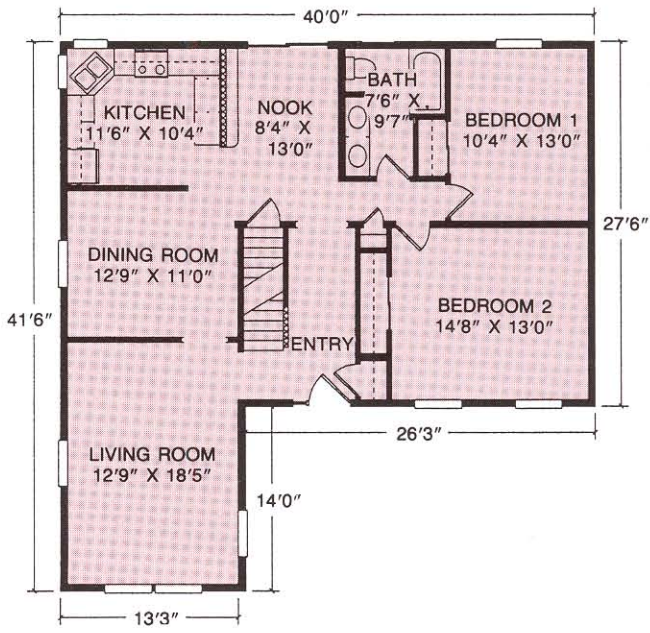


Cape Barrow

Plan No. 341 ■ 1105 SQ. FT.
 A charming home with features you'll love. Two large bedrooms, full bath, formal living room and dining room, kitchen with delightful, sunny breakfast nook.

Cape Henry

Plan No. 342 ■ 1306 SQ. FT.
 Formal living with this L cape you'll love. Two bedrooms, formal dining and living room, the entrance foyer welcomes you to comfortable living.



A DIVISION OF MUNCY HOMES INC.
 1565 PA ROUTE 442 EAST
 MUNCY, PA 17756
 (570) 546-2264

MEMBER:



THE NATIONAL ASSOCIATION OF HOMEBUILDERS

MEMBER:



Due to our continuing program of Product Improvement, Plans, Specifications, Materials and Prices are subject to change without notice.
 Renderings and floor plans are promotional illustrations that approximate size and may depict optional or suggested features. 10MKBFPT 02/05

Your Builder/Developer

THE BUILDER/DEVELOPER IS AN INDEPENDENT BUSINESSMAN, NOT AN AGENT OF SUPERIOR BUILDERS. From time to time, Builder/Developer may perform service work at the request of Superior Builders, but in doing so Builder/Developer is still an independent contractor and is alone responsible for the quality of his work. SUPERIOR BUILDERS SHALL HAVE NO RESPONSIBILITY OR LIABILITY FOR ANY ACT OR OMISSION OF BUILDER/DEVELOPER OR ANY MATERIAL PROVIDED BY BUILDER/DEVELOPER, UNDER ANY CIRCUMSTANCES.